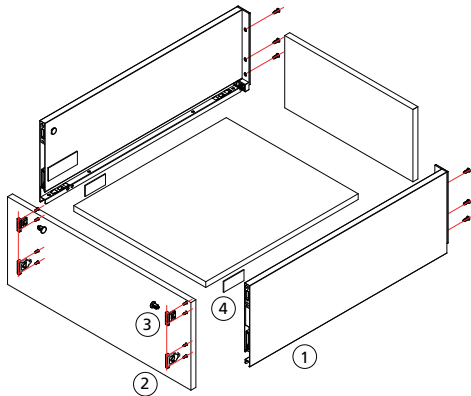


V-Line Height	A	B	C	D	E	F	G	H
90	63	32			29	32		120
128	101	32			34	32	32	158
175	148	32	64	32	29	32	64	205

Scale : mm

Installation Instructions

**V-LINE SLIM BOX Quick Installation Guide of NJ-ADK01/02/03**

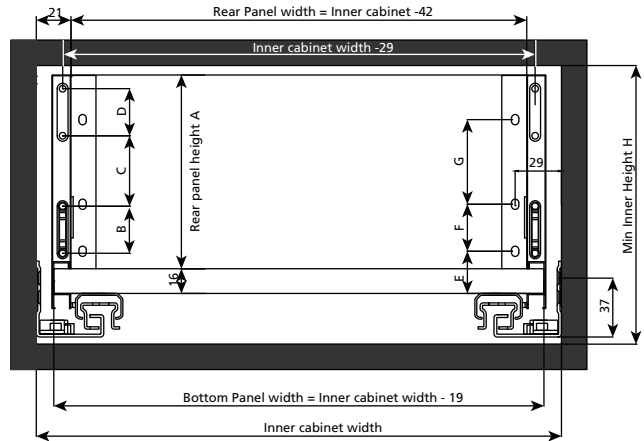


Counter sunk screw is recommended  
Please utilize the correct thickness 16 mm for bottom and rear panel.

Verify if you have all the parts to install V-Line Metal Drawer.

- ① metal side panel x 1 pair
- ② drawer front plate x 1 pair
- ③ top drawer front connector x 1 pair (only available for V-Line Height 175mm)
- ④ mechanism cover x 1 pair

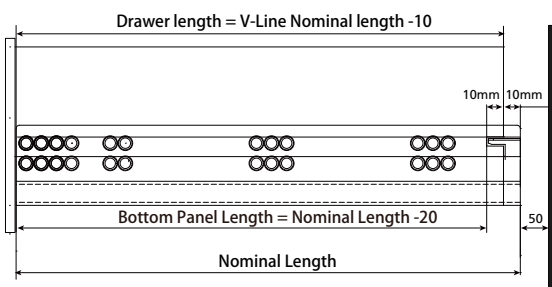
**Step 1 > Installation dimension (front view)**



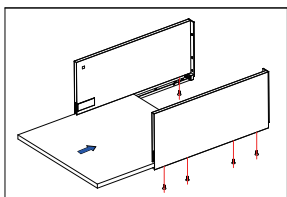
V-Line Height	A	B	C	D	E	F	G	H
90	63	32	-	-	29	32	-	120
128	101	32	-	-	34	32	32	158
175	148	32	64	32	29	32	64	205

Scale : mm

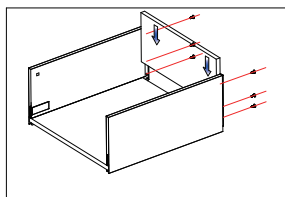
**Step 2 > Installation dimension (side view)**



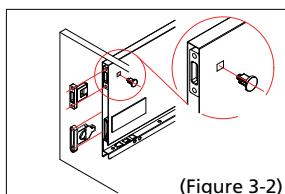
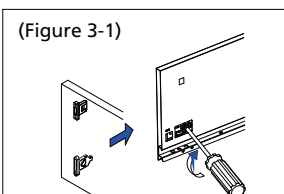
**Step 3 > Drawer Assembling**



\* Drawer Bottom  
W(Inner cabinet width - 19mm)  
x D(V-Line Nominal length - 20mm)  
x T(16mm)



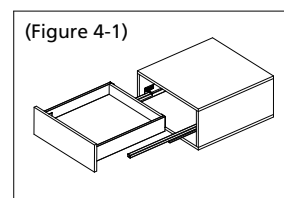
\* Rear Panel  
W(Inner cabinet width - 42mm)  
x H(V-Line height - 27mm)  
x T(16mm)



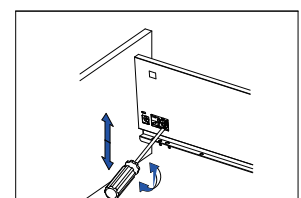
Fix the drawer front plate to the drawer front as shown on front view dimension, then insert it to the side panel. Turn the middle screw clockwise to screw the drawer front. Loosen it counter clockwise. (Figure 3-1)

Insert the adapter through the hole of side panel into the drawer front connector.(only for V-Line height 175mm) (Figure 3-2)

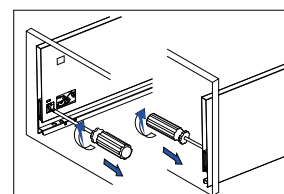
**Step 4 > Drawer adjustments**



After drawer is completed, place the drawer 10cm from the front of slides, and push it all the way back for integration.( Figure 4-1)



Turn the last screw on side panel for ± 2 mm vertical adjustment.



Turn the first screw on side panel for + 1 mm horizontal adjustment.

