

# Wooden Drawer System Concealed Slide



NJ-A5K01 / NJ-A5K03

# New under mount concealed slides !

New version provides a better movement, enhanced deflection performance and seamlessly soft closing.



## 1.2 mm thickness of drawer member.

Slight deflection with stronger drawer support strength.

**Strong**



## 6 cm travel length of soft close motion.

Extremely silent and effortless drawer movement with exclusive dry-damper technology.

**Smooth**



## Drawer lift prevent.

Preventing accidental drawer lift by unique quick removal handle lock design.

**Safe**

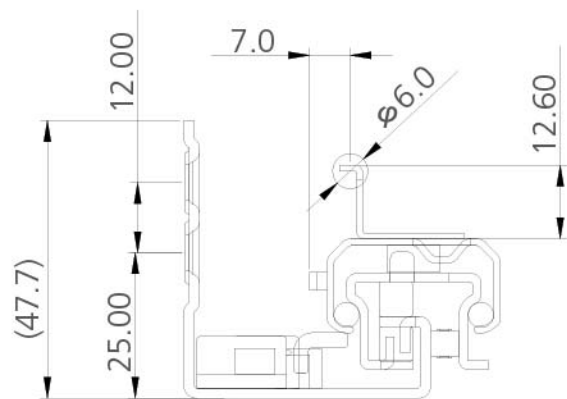


**Precise**

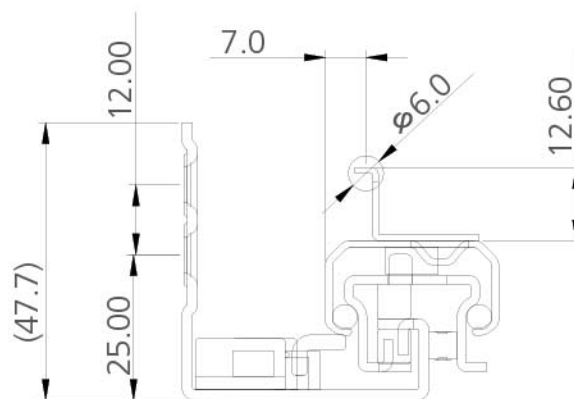
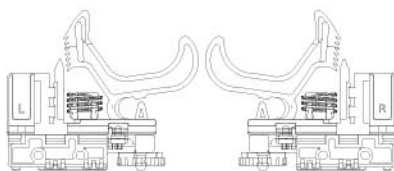
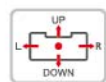


## Height and side four way adjustment.

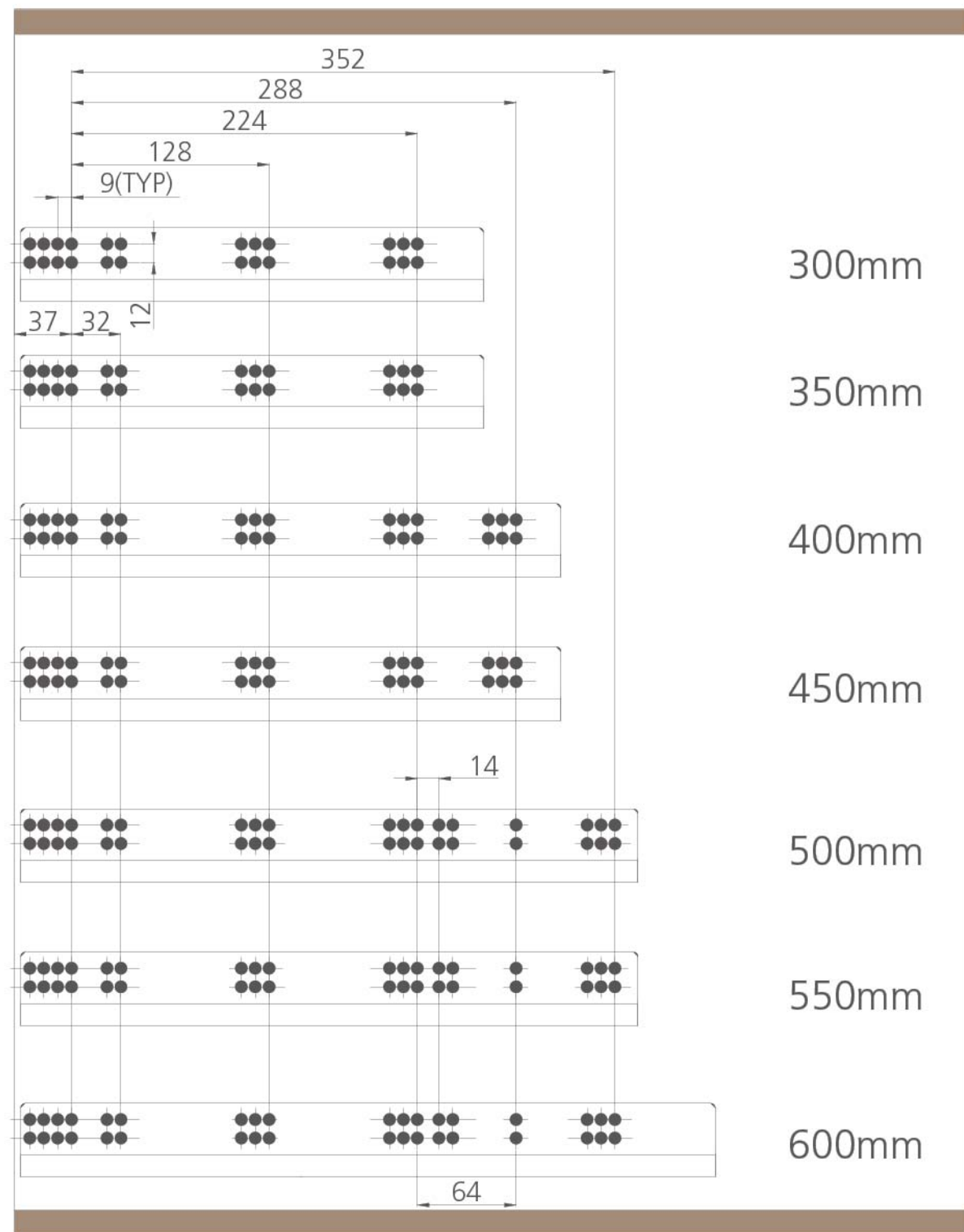
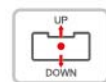
Adjusting drawer panel clearance easily with precise handle design.



NJ-A5K01 profile



NJ-A5K03 profile





# NJ\_A5K01 Installation

16 mm (5/8 inch) / drawer side / 35 kgs loading (75 Pound)

## Installation Instructions

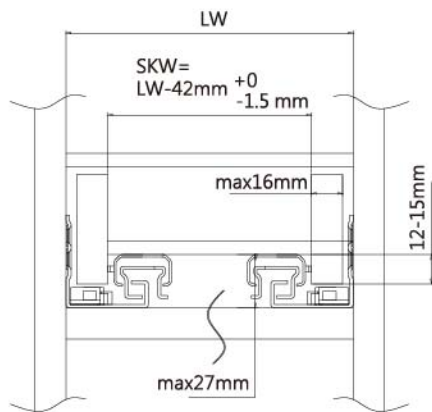
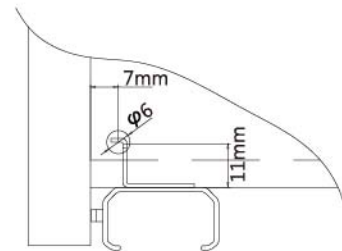
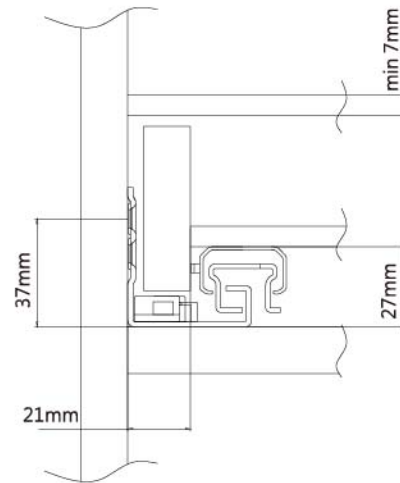
### Step 1 > Drawer construction



NJA5K01 is built for 16 mm (5/8 inch) drawer side only. Thinner or thicker drawer side might cause slide to malfunction. **(Figure1)**



Please construct the drawer as per the following dimension.



Front View

Rear View

Drawer / inner drawer

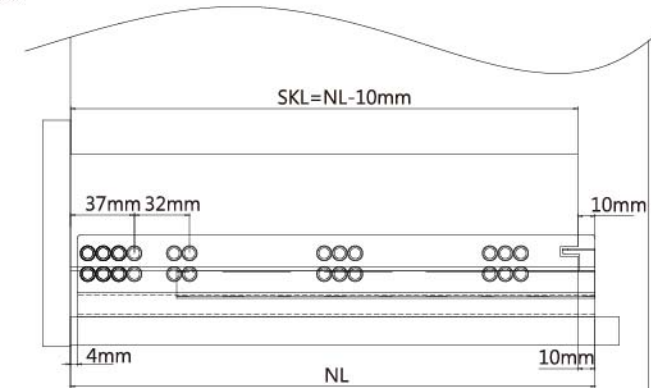
SKW Internal width

LW Inner cabinet width

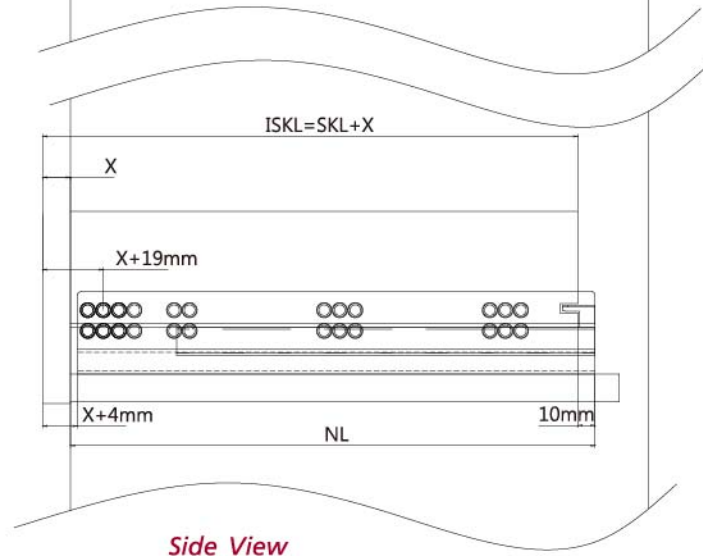
SKL Drawer length

NL Nominal Length

Overlay



Inset



Side View

Inset Drawer Front = X

ISKL Inner drawer length (W / FRONT)

SKL Drawer length (W / O FRONT)

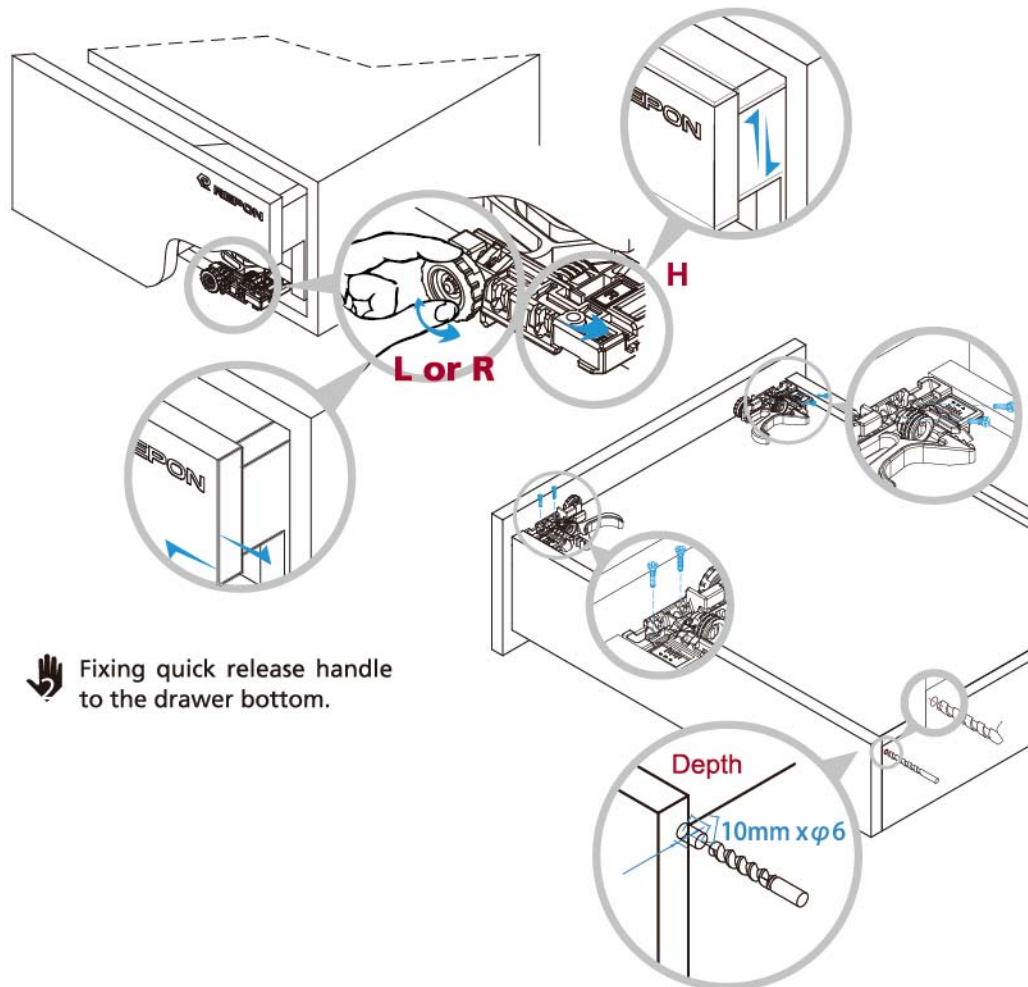
NL Nominal length



## Installation Instructions

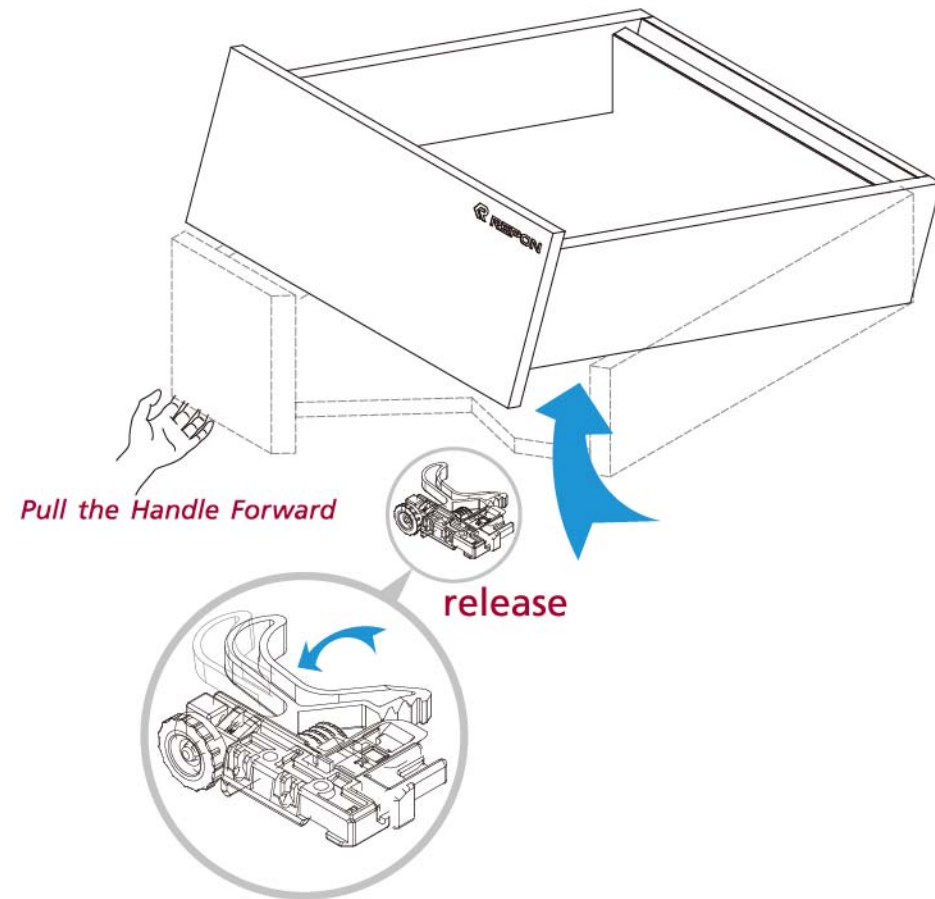
### Step 2 > Adjustment

✎ For drawer front adjustment, please turn wheels rotate the lever as the illustration. You may raise the drawer front by a maximum of 4 mm, or left or right by 2 mm respectively



### Step 3 > Drawer removal

✎ Pull the handle forward to release.



# NJ\_A5K03 Installation

18 mm ( 3/4 inch ) / drawer side / 35 kgs loading ( 75 Pound )

## Installation Instructions

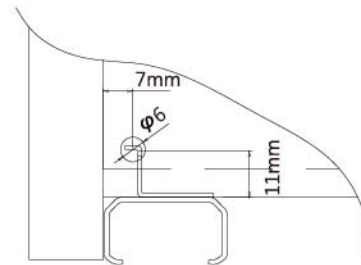
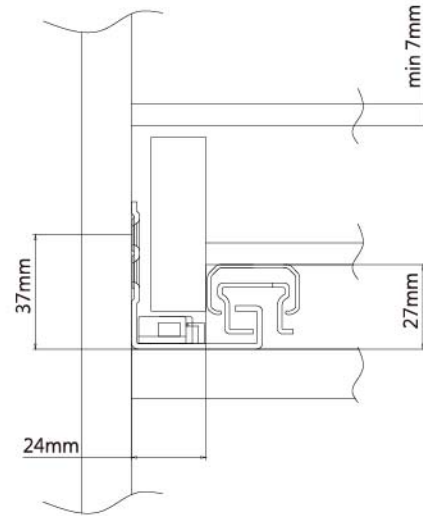
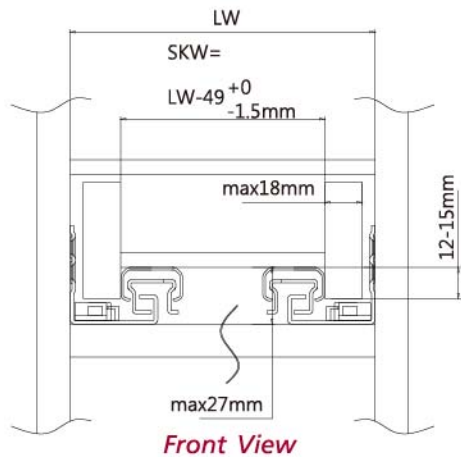
### Step 1 > Drawer construction



NJA5K03 is built for 18 mm ( 3/4 inch ) drawer side only. Thinner or thicker drawer side might cause slide to malfunction. **(Figure1)**



Please construct the drawer as per the following dimension.



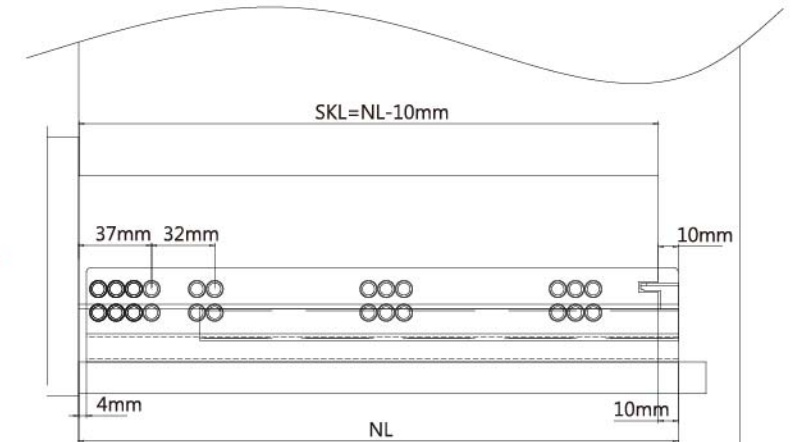
Drawer / inner drawer

SKW Internal width

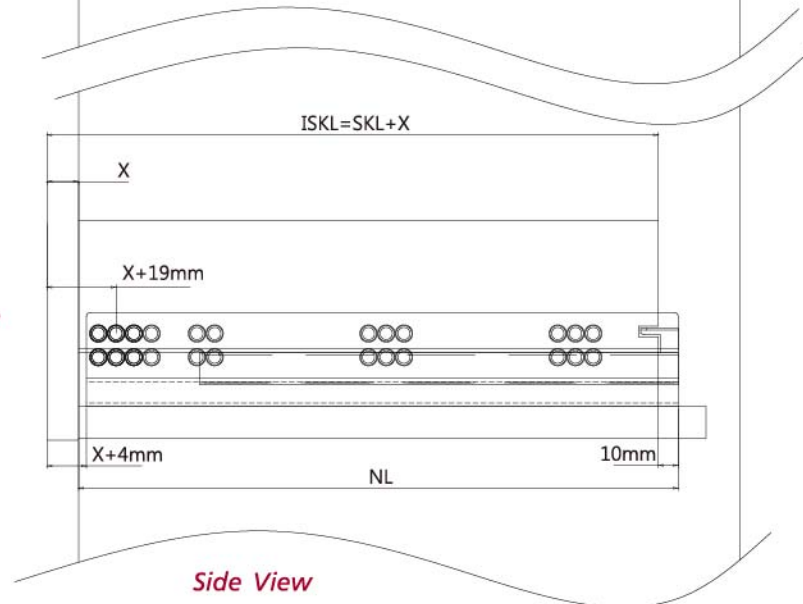
LW Inner cabinet width

SKL Drawer length  
NL Nominal Length

**Overlay**



**Inset**



Inset Drawer Front = X  
ISKL Inner drawer length ( W / FRONT )  
SKL Drawer length ( W / O FRONT )  
NL Nominal length



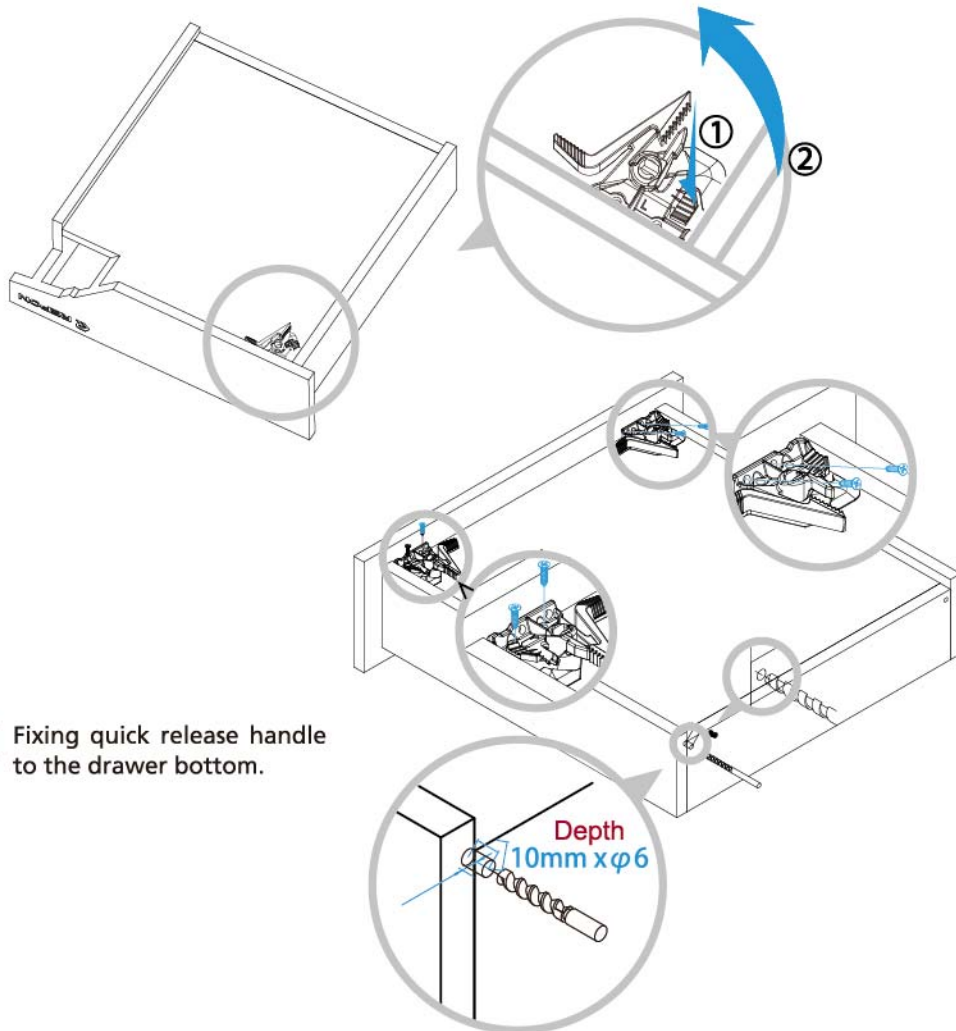
# NJ\_A5K03 Installation

18 mm ( 3/4 inch ) / drawer side / 35 k9s loading ( 75 Pound )

## Installation Instructions

### Step 2 > Adjustment

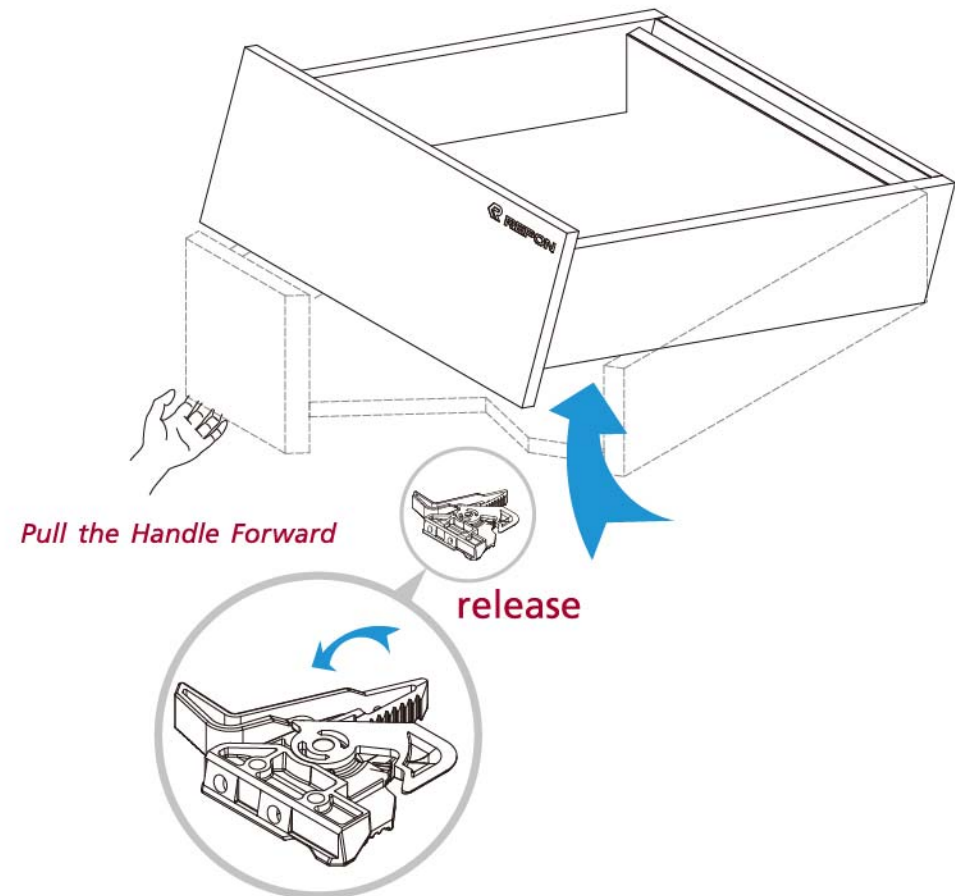
✎ For drawer front adjustment, please turn wheels rotate the lever as the illustration. You may raise the drawer front by a maximum of 4 mm, or left or right by 2 mm respectively



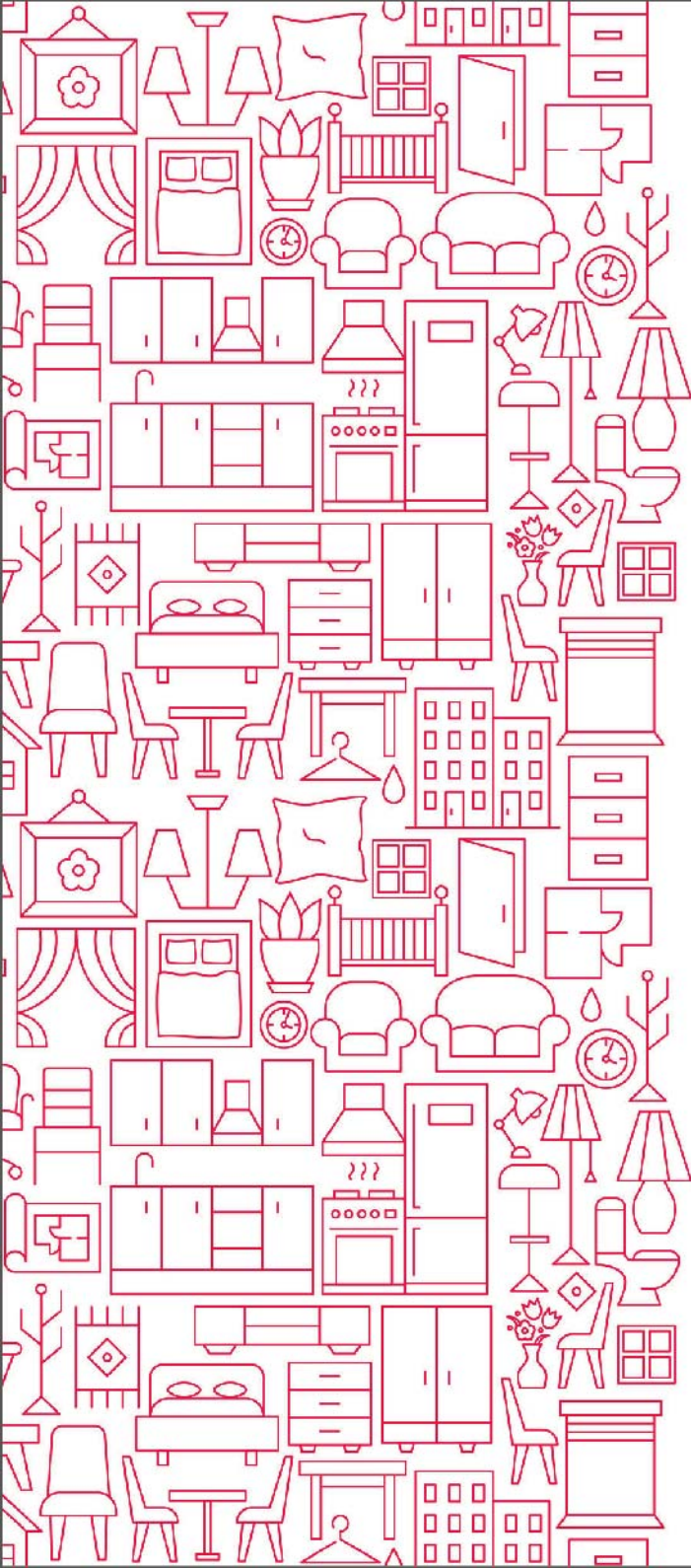
✎ Fixing quick release handle to the drawer bottom.

### Step 3 >

✎ Pull the handle forward to release.







**NAN JUEN INTERNATIONAL CO., LTD.**

No.2, Dazhi Rd., Taoyuan Dist., Taoyuan City 330,  
Taiwan (R.O.C.)

**T** +886-3-3642777 (Rep.) **F** +886-3-3762777

**E** sales@repon.com.tw

**[www.repon.com.tw](http://www.repon.com.tw)**