



NJ-23001

Single Extension Slides

50 pound class (22 kgs)



Home



Packing



Download



Print



Q&A



Loading

» Features » Drawing » Specification Table » Installation Instructions

Product Photo

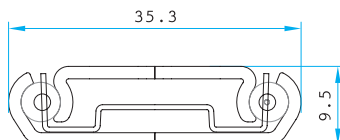


Features



Mounting | Side mount.
Side Clearance | 3/8" plus 1/64", minus 0 each side.
Height | 1-25/64" (35.3 mm).
Loading | 50 pound (22 kgs) class.
Size | 12" (300 mm) through 26" (650 mm) at 2" (50 mm) increment.
Feature | Low profile for shallow drawers, shelves or trays. Metal latch detent in/lock function in extended position for easy drawer removal and industrial cabinet applications.
Option | NJ23002-Metal latch positive stop.
NJ21001-Plastic lever for positive stop.

Profile



Surface Treatment

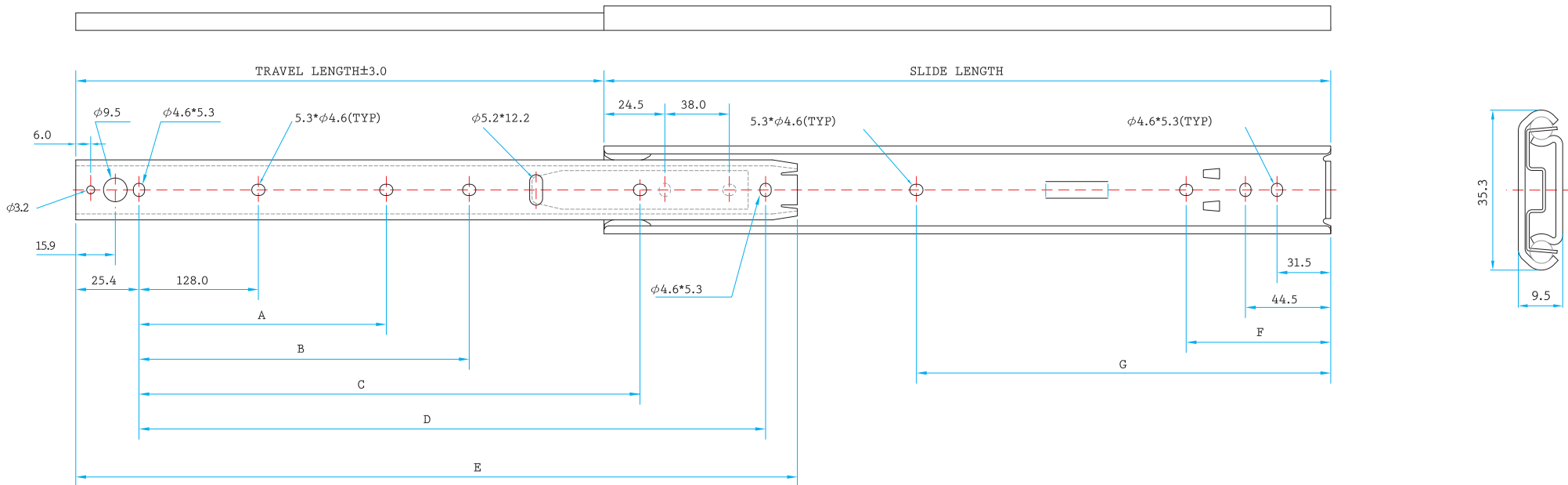
- Clear Zinc
- Black E. Coating
- Stainless Steel
- Black Zinc
- White E Coating
- Galvanized Steel

Packaging

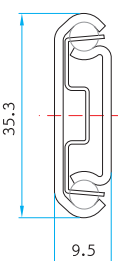
- Distribution / 25 pairs per box

*Box QTY might vary with different length, the info provided here is based on 18" (450 mm)

Drawing



Profile



Specification Table

SIZE	SL	TL	A	B	C	D	E	F	G
12" (300mm)	302.05	199.0			212.3		299.45		
14" (350mm)	352.85	249.5			263.1		350.25		244.6
15" (375mm)	378.25	275.0			288.5		375.65		244.6
16" (400mm)	403.65	300.5			313.9		401.05		244.6
18" (450mm)	454.45	330.5	256.0		343.2	401.3	451.85	155.7	320.8
20" (500mm)	505.25	381.0	256.0		394.4	452.1	502.65	155.7	320.8
22" (550mm)	556.05	406.0	256.0		419.8	502.9	553.45	155.7	320.8
24" (600mm)	606.85	431.0	256.0	352.0	445.2	553.7	604.25	155.7	244.6
26" (650mm)	657.65	482.5	256.0	352.0	496.0	604.5	655.05	155.7	244.6

Installation Instructions

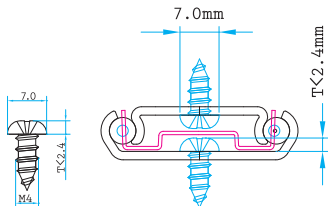
QUICK INSTALLATION GUIDE OF NJ-23001

Single Extension Slide, 50 pound (22 kgs) loading



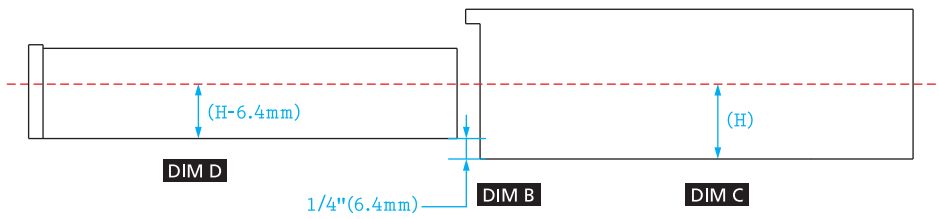
READ THE QUICK INSTALLATION GUIDE FIRST BEFORE INSTALLATION

A. Recommended screws for fixing - M4 machinery screw (for industrial application) or #8 pan head screws. Each side of slide requires at least 6 screws.



Technical Specifications for drawer or pull-out shelf

- Drawer or pulling-out shelf must be at least 9.8 mm narrower than cabinet opening on each side. (DIM A)
- Bottom of drawer or pulling-out shelf bottom shall have 6.4 mm or 1/4" minimum clearance from the bottom of cabinet. (DIM B)
- Mark a center line from the bottom of cabinet with the proper height (H). (DIM C)
- Mark a center line from the bottom of drawer with the proper height (H-6.4 mm). (DIM D)



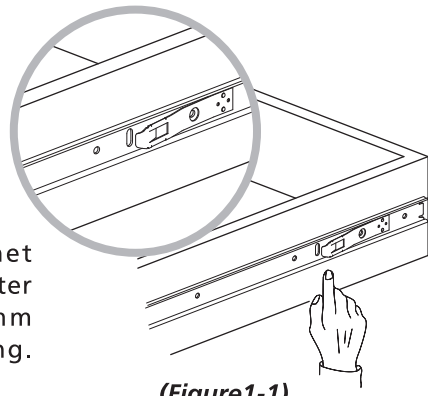
Step 1 > Install cabinet member to cabinet



Press the release latch down to disconnect the drawer member. (Figure1-1)



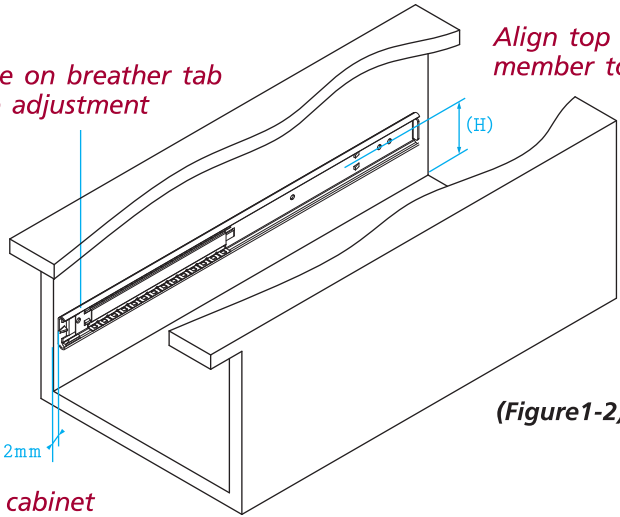
Align the center line of cabinet member to the determined center line (*H), and place slide 2 mm backward from cabinet opening. (Figure1-2)



* The height (H) must not be shorter than 35.3 mm.

Use hole on breather tab for side adjustment

Align top of cabinet member to (H) line



Set the cabinet member 2mm back



Fix the slides through holes on cabinet member. Leave the screw loose for final adjustment. Move the ball retainer back and forth, and make sure no screw is bound.

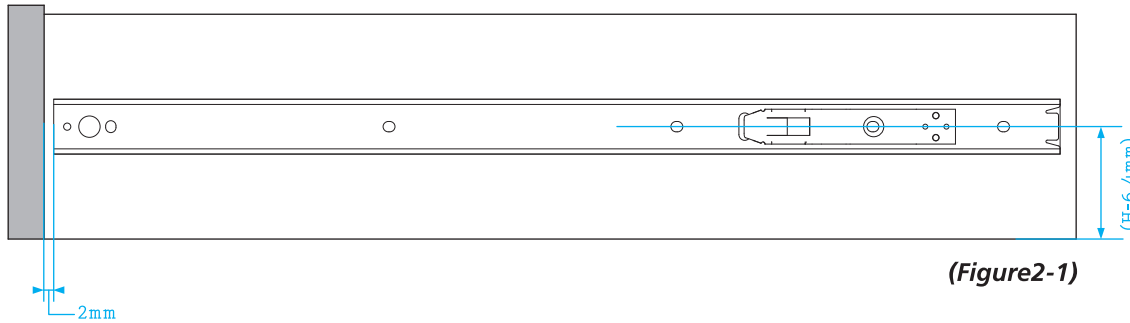
Step 2 > Install drawer member to drawer



Align the center line of drawer member to the determined center line(H-6.4 mm), and place drawer member 2 mm backward from the drawer front or the pulling-out shelf edge. Shall the silencing cushion is used, place drawer member 5.2 mm backward. (Figure2-1)



Fix the drawer member through holes. Leave the screw loose for final adjustment.



Step 3 > Insert drawer into cabinet and adjustment

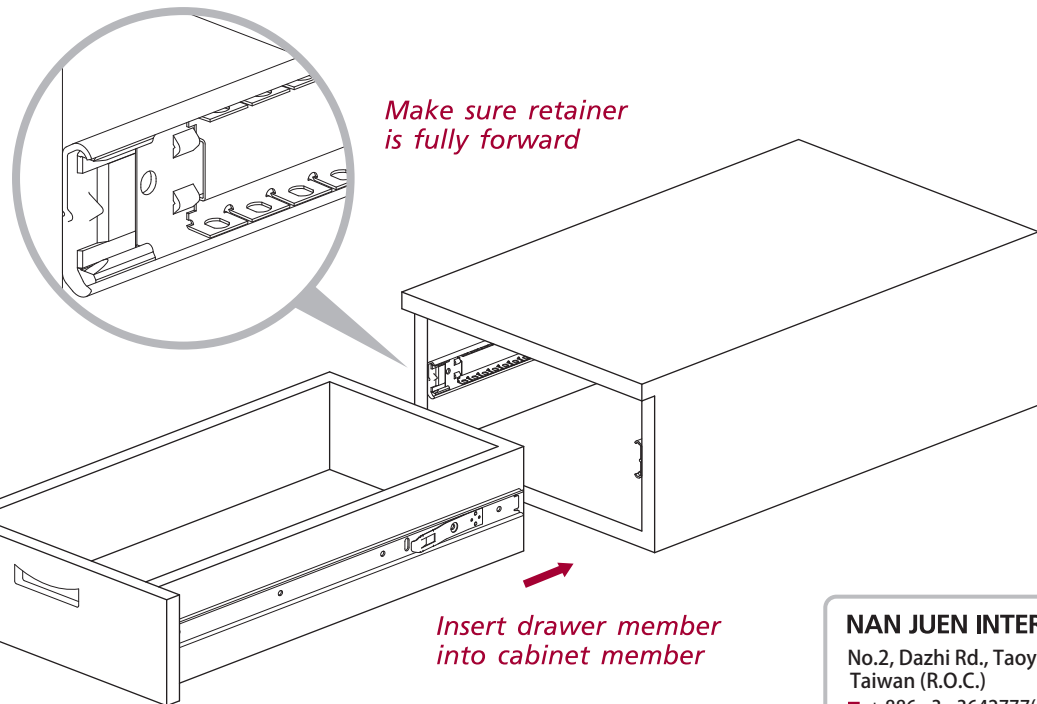


Make sure the bearing retainers are fully forward. Insert drawer member into the cabinet member, release the lock open by press the latch, and then close the drawer completely. (Figure3-1)

Final Adjustment.....

Try to open and close the drawer to see if lock open and slides function correctly. If so, secure the screws and install additional screws as necessary.

※This instruction is for reference only. It may vary due to different applications.



Insert drawer member into cabinet member

NAN JUEN INTERNATIONAL CO., LTD.
No.2, Dazhi Rd., Taoyuan Dist., Taoyuan City 330, Taiwan (R.O.C.)
T + 886 - 3 - 3642777(Rep.) F + 886 - 3 - 3762777
www.repongroupp.com

